



# Security

Hans Bos  
National Technology Officer  
Microsoft The Netherlands  
[hans.bos@microsoft.com](mailto:hans.bos@microsoft.com)

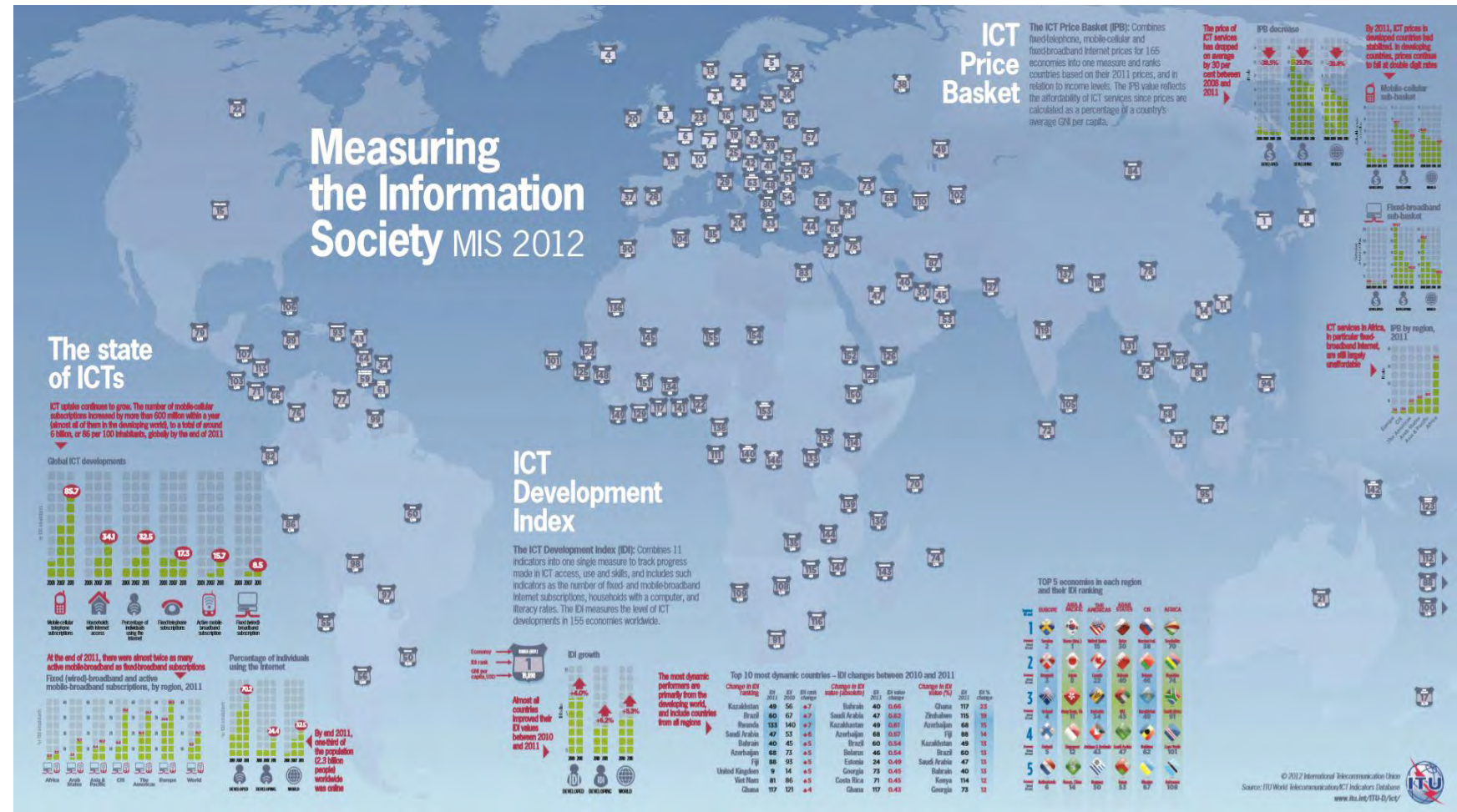
# Measuring the Information Society 2012

## The Netherlands

#6 ICT Development Index  
ITU Information Society 2012

#11 Networked Readiness  
Global IT Report 2010-2011  
World Economic Forum

#5 Global Competitiveness  
Global Competitiveness 2012-2013  
World Economic Forum



# Households in The Netherlands

94% own one or more PC's

94% with internet access

83% broadband internet

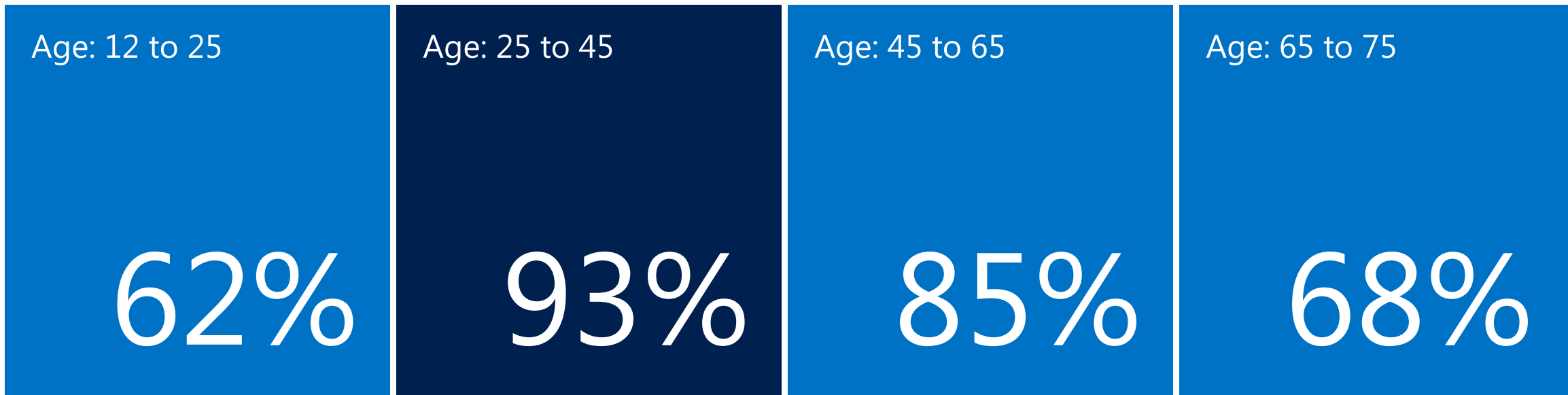
79% active e-commerce





# Example: Telebanking

Use of internet for telebanking in 2011 as percentage of internet users.



Source: CBS, Central Bureau for Statistics in The Netherlands

It's not just that software runs the power grid, the global financial system, and the armed forces around the world, but that the fabric of society is connected through email, browsing, social networking, search, and web applications.

Scott Charney  
CVP Trustworthy Computing  
Microsoft

# Hacking in the Netherlands Took Aim at Internet Giants

By THE ASSOCIATED PRESS

Published: September 5, 2011

AMSTERDAM (AP) — Attackers who hacked into a Dutch Web security firm have issued hundreds of fraudulent security certificates for intelligence agency Web sites, including the C.I.A., as well as for Internet giants like Google, Microsoft and Twitter, the Dutch government said on Monday.

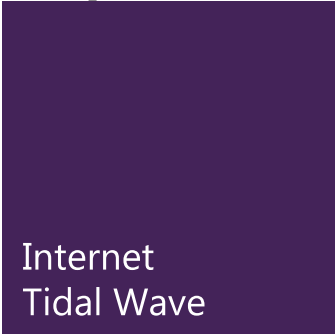
Experts say they suspect the hacker — or hackers — operated with the cooperation of the Iranian government, perhaps in attempts to spy on dissidents.

The latest versions of browsers including Microsoft's Internet Explorer, Google's Chrome and Mozilla's Firefox are now rejecting certificates issued by the firm that was hacked, DigiNotar. But in a statement on Monday, the Dutch Justice Ministry published a list of the fraudulent certificates that greatly expands the scope of the July hacking attack that DigiNotar acknowledged only last week. The list also includes certificates that were sent to sites operated by Yahoo, Facebook, Microsoft, Skype, AOL, the Tor Project, WordPress, and by intelligence agencies like Israel's Mossad and Britain's MI6. (...)

# Trustworthy Computing



1990 1994 1998 2002 2003 2004 2006 2008 2009 2010 2012



# Example: Microsoft IT



## RISK MANAGEMENT

Intellectual property protection  
Increased Data Leakage and Portability  
Insider Threats  
Risk Management vs Risk Elimination  
Business Continuity

## BUSINESS ENVIRONMENT

Support the rapidly changing business  
Improved Business Intelligence  
Robust continuity plans  
Deliver first and best

## TECHNICAL EXCELLENCE

Cloud Computing  
Data loss prevention  
SIEM platforms and programs  
IAM Governance and process  
Emerging technologies

## OPERATIONAL EXCELLENCE

Better integration with board/ERM  
Vendor and 3rd party management  
Asset and configuration management  
Executive reporting and metrics  
Awareness and training

41,000 Windows Phones

700,000 Sharepont Sites

102,000 Windows clients

49% of users on Lync

100+ countries

190,000 end users

1.3 million devices

1.7B hits/day microsoft.com

7M spam filtered per day

85M Ims per month

34K Lync sessions per month



# Example: Security Intelligence Report

## Worldwide Threat Assessment

Infiltration of Supply Chain

Vulnerability trends

Criminal focus on Java and HTML

Exploit trends

Malware / potentially unwanted software

SPAM, Phishing and drive-by attacks

## Regional Threat Assessment

105 regions

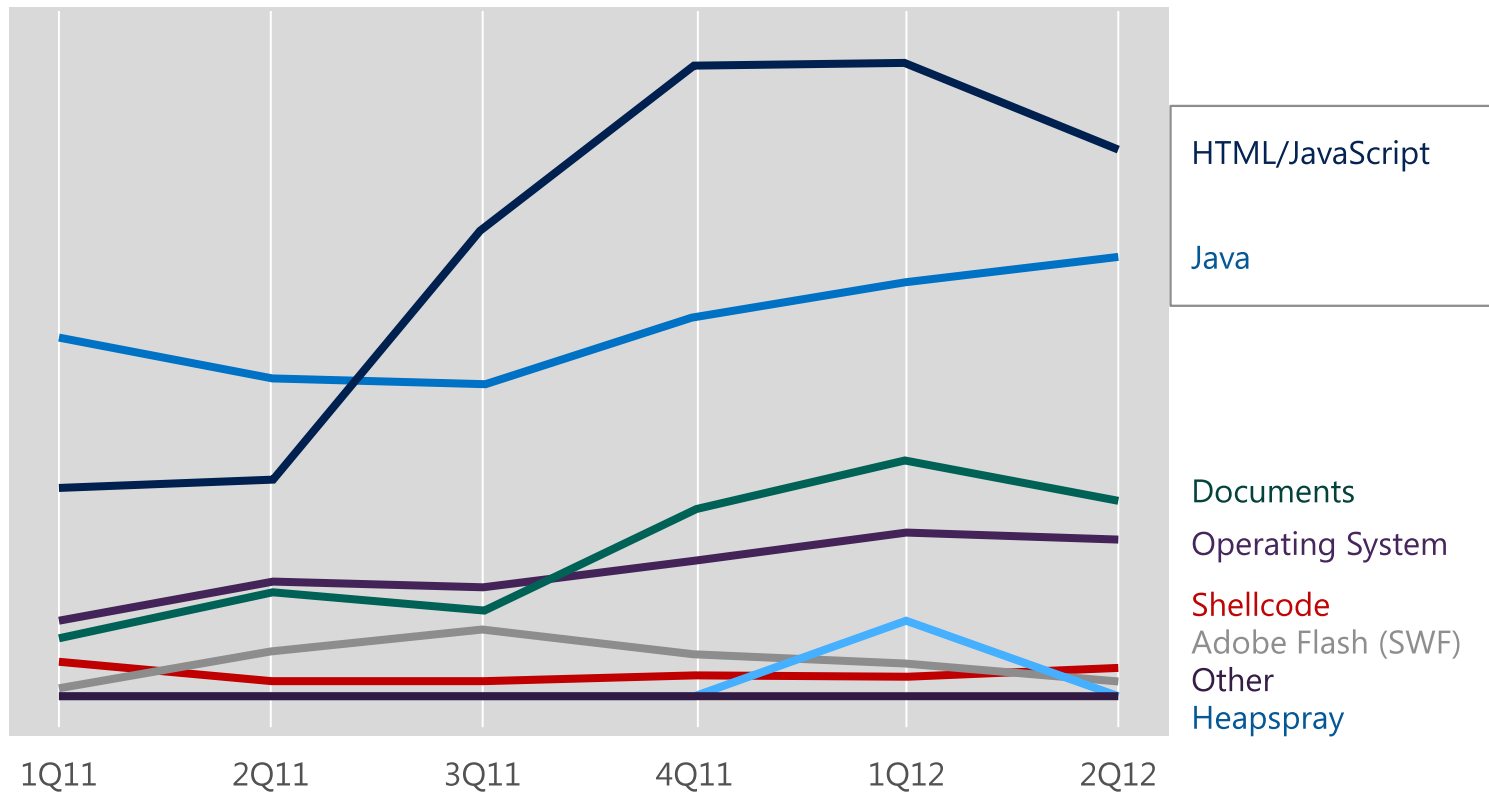
[www.microsoft.com/sir](http://www.microsoft.com/sir)

Microsoft Security Intelligence  
Report

Volume 13  
January through June, 2012

# Example: Security Intelligence Report

## Top Exploits

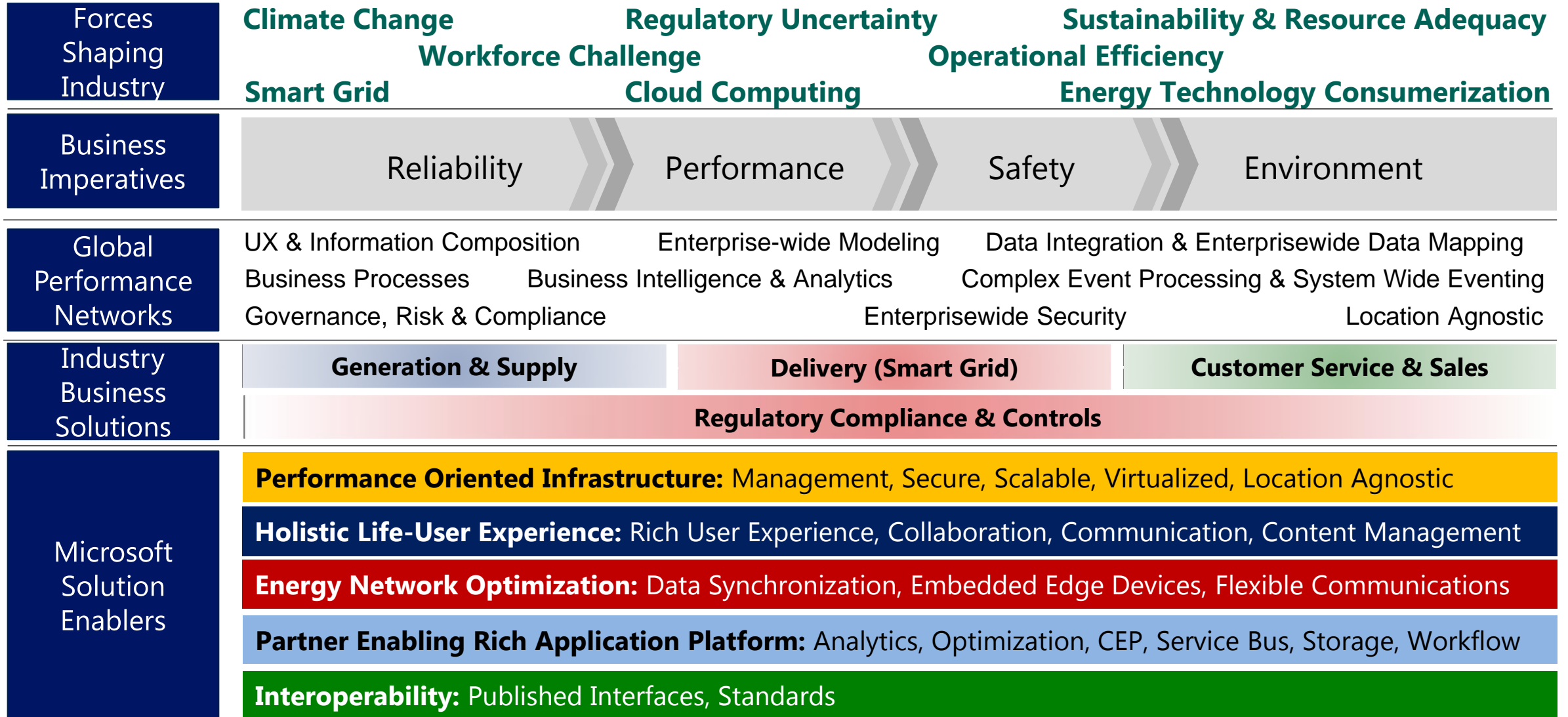


Microsoft Security Intelligence  
Report

Volume 13  
January through June, 2012

HTML/Java → 70% of Top Exploit Families

# Smart Energy Reference Architecture (SERA)



International

Public-Private Partnership models for international level collaboration need stronger support from both government and industry

National

Public-Private Partnership models maturing at the National Level for more than 10 years around the world



# Cybersecurity Policy & Partnership Evolutionary Curve

New challenges need new models  
Inclusivity is key to understanding full dimension of cybersecurity challenges  
International system not set up for enabling PPP to assist





"My dear fellow," said Sherlock Holmes as we sat on either side of the fire in his lodgings at Baker Street, "life is infinitely stranger than anything which the mind of man could invent."

## A Case of Identity

The Adventures of Sherlock Holmes  
Arthur C. Doyle